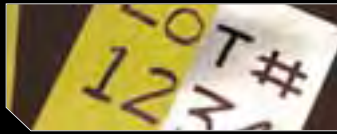


BLEED THRU



Typical Applications

- Ideal for fabricating structural steel or layout work where marks are required to bleed through a primer coat covering the marks

- Marks bleed through when painted over with oil/solvent based paints and primers
- Makes permanent marks on plastic, metal, glass, ceramics, and most non-porous surfaces.
- Fast drying permanent ink marks on almost any surface
- Can be used for identification purposes
- Chisel tips are replaceable to assure complete use of paint in each marker
- Valve action mechanism prevents ink in barrel from drying when cap is left off
- Threaded barrel allows the marker to be screwed into a jig or apparatus

BLEED THRU™

| Product Code and Color |
|------------------------|
| 44541 Black |



STEEL BLUE®



Typical Applications

- Provides a deep, uniform color that prevents glare so scribes appear clear, sharp and precise for machinists

- Resists cracking and chipping
- Add practically no thickness to work piece
- Dries in minutes
- Reduces eye strain
- Toluene free

STEEL BLUE®

| Product Code | Size |
|--------------|-----------------------|
| 80000 | Aerosol 16 oz. |
| 80200 | Felt Applicator 2 oz. |
| 80300 | Brush-In-Cap 4 oz. |
| 80400 | Brush-In-Cap 8 oz. |
| 80600 | Bottle 930 mL |



REMOVER & CLEANER



Typical Applications

- Prepares surfaces for better adhesion of layout fluids and removes layout fluids when project is complete

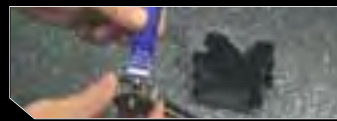
- Prepares metal surfaces
- Dries in minutes
- Does not contain toluene or chlorinated solvents

REMOVER & CLEANER

| Product Code | Size |
|--------------|-----------------|
| 82038 | Aerosol 16 oz. |
| 82638 | Bottle 930 mL |
| 82738 | Bottle 1 Gallon |
| 82838 | Pail 5 Gallons |
| 82938 | Drum 55 Gallons |



HI-SPOT BLUE



Typical Applications

- Detects high spots on bearings, gears and other close fits

- Blue, soft, uniform paste spreads easily and evenly
- The film remains pliable and transferable and in good condition for months
- Saves time and money in surface scraping work

HI-SPOT BLUE

| Product Code | Size |
|--------------|-------------|
| 83307 | .55 oz Tube |



CROSS CHECK™



Typical Applications

- Quality control and warranty work

- Visually detects loose nuts and bolts
- Tamper proof torque mark
- Highly visible fluorescent orange color
- Excellent adhesion
- Safe for most surfaces
- Provides warranty protection

CROSS CHECK™

| Product Code | Color | Size |
|--------------|--------|-----------|
| 83314 | Orange | 1 oz Tube |



Merchandising

CANISTERS

- Come filled and ready to display
- Compact footprint: 4" (W) x 6.75" (H)
- BRITE-MARK® display holds: 12 Yellow, 12 Black, 12 White
- STRIKE-MARK™ display holds: 36 Black

Pen Canisters

| Product Code | Pack Description |
|--------------|-------------------------------|
| 84060 | BRITE-MARK® Display (Filled) |
| 84080 | STRIKE-MARK™ Display (Filled) |
| 84061 | BRITE-MARK® Display (Empty) |
| 84081 | STRIKE-MARK™ Display (Empty) |



BLISTER CARDS



BRITE-MARK® Blister Card

| Product Code and Color |
|------------------------|
| 84101 Blue |
| 84102 Black |
| 84107 Green |
| 84104 Yellow |
| 84103 White |
| 84105 Orange |
| 84106 Red |



TEXPEN® Blister Card

| Product Code and Color |
|------------------------|
| 16018 Blue |
| 16038 Black |
| 16048 Green |
| 16068 Yellow |
| 16088 White |
| 16108 Orange |
| 16028 Red |

DISPLAY

- Adds visibility to markers
- Constructed with light weight, corrugated cardboard
- Configured to hold any marker box in the DYKEM® marker line
- Compact footprint: 8" (W) x 11.25" (D) x 11" (H)

PEN DISPLAY

| Product Code | Pack Description |
|--------------|------------------|
| 84999 | Pen Display |



SHOWCASE

- Showcases the variety of DYKEM® marking systems line
- Comes stocked with product and 50 sheets of literature
- Footprint with Literature: 12.5" (W) x 10" (D) x 17.5" (H)
- Footprint without Literature: 12.5" (W) x 10" (D) x 14.5" (H)

PEN SHOWCASE

| Product Code | Pack Description |
|--------------|------------------|
| 84997 | Pen Showcase |



DEMO KIT

- Allows for demonstration of the entire DYKEM® product line
- Comes with product and demonstration supplies and instructions

PEN DEMO KIT

| Product Code | Pack Description |
|--------------|------------------|
| 84998 | Pen Demo Kit |



For further information on DYKEM® products, visit us at www.dykem.com or call us direct at 800.443.9536

Distributor Information



Olathe, Kansas 66061 • USA • Fax: 913.397.8761 • Phone: 913.397.9889

L1338
090812

DYKEM®
Marking Products



THE MARK OF EXCELLENCE™

Paint Markers

Temporary Ink Markers

Speciality Markers

Layout Fluids

Paint Markers



Typical Applications

- Identifying inventory
 - Work in-progress
 - Identifying tools
 - Welding/fabricating metal
 - Finished products
- General purpose felt tip paint markers that write on virtually any surface
 - Quick drying, oil-based paint withstands indoor and outdoor conditions without fading, chipping or losing opacity
 - Valve action mechanism prevents paint in barrel from drying when cap is left off
 - Formula is not xylene-based
 - Available in different tip sizes and colors
 - Drying time: 25-35 seconds

BRITE-MARK® Fine

- Permanent paint marker with fine, fiber valve action tip ideal for the easy labelling of small parts

| Product Code and Color | | | |
|------------------------|--------|-------|--------|
| 41001 | Blue | 41010 | Orange |
| 41003 | Black | 41002 | Red |
| 41008 | White | 41004 | Green |
| 41006 | Yellow | 41014 | Gold |
| 41016 | Silver | 41045 | Violet |

BRITE-MARK® 916 Medium

- Permanent paint marker with medium, fiber valve action tip

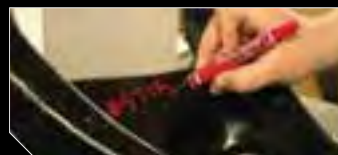
| Product Code and Color | | | |
|------------------------|---------|-------|----------|
| 84001 | Blue | 84006 | Red |
| 84002 | Black | 84007 | Green |
| 84003 | White | 84051 | Gold |
| 84004 | Yellow | 84050 | Silver |
| 84005 | Orange | 84019 | Violet |
| 84009 | Pink | 84010 | Brown |
| 84008 | Lt Blue | 84022 | Lt Green |

BRITE-MARK® 40 Medium

- Permanent paint marker with medium, fiber valve action tip. Clip cap screw for secure closure. Threaded barrel allows the marker to be screwed into a jig or apparatus

| Product Code and Color | | | |
|------------------------|--------|-------|--------|
| 40001 | Blue | 40010 | Orange |
| 40003 | Black | 40002 | Red |
| 40008 | White | 40004 | Green |
| 40006 | Yellow | 40014 | Gold |
| 40016 | Silver | 40007 | Brown |
| 40045 | Violet | | |

BRITE-MARK® Paint Markers / Valve Action



Typical Applications

- Identifying inventory
- Work in-progress
- Identifying tools
- Welding/fabricating metal
- Finished products

- General purpose felt tip paint markers that write on virtually any surface
- Water-based permanent paint
- Low Odor / Low VOC
- No hazardous air pollutants (HAP's)
- Valve action mechanism prevents paint in barrel from drying when cap is left off
- Available in different colors
- Drying time: 60-90 seconds

BRITE-MARK® H₂O Medium

- Permanent water-based paint marker with medium, fiber valve action tip.

| Product Code and Color | | | |
|------------------------|--------|-------|--------|
| 91603 | Blue | 91425 | White |
| 91426 | Black | 91604 | Orange |
| 91602 | Green | 91428 | Red |
| 91427 | Yellow | | |

BRITE-MARK® H₂O Water-Based



Typical Applications

- Shrink wrap and plastics
- Machine shops

- General purpose marker
- Highly resistant to coolants and cutting fluids
- Not a xylene based formula
- Valve action mechanism prevents ink in barrel from drying when cap is left off
- Threaded barrel allows the marker to be screwed into a jig or apparatus
- Drying time: 45 seconds - 1 minute

TUFF GUY™ General Purpose Marker

| Product Code | Color | Product Code | Color |
|--------------|--------|--------------|-------|
| 44203 | Black | 44175 | White |
| 44819 | Red | 44177 | Green |
| 44401 | Yellow | 44179 | Blue |

TUFF GUY™ General Purpose



Typical Applications

- Structural steel
- Steel stockholders
- Construction sites
- Identifying rusty / oily / greasy tools
- Identifying parts that are stored outside

- Stainless steel-ball tip - no risk of tip wear even if you are writing on rough concrete or rusty metal
- Easily writes through oil, grease and water
- Writes at all angles, even upside down
- Paint withstands extreme weather conditions without losing legibility or brightness
- Available in different tip sizes and colors
- TEXPEN® marker is a smaller version of the DALO® marker
- Drying time: 25-35 minutes

TEXPEN®/DALO® Steel Tip Paint Markers

TEXPEN® Industrial Paint Marker

- Steel tip paint marker - Medium Barrel

| Fine Tip Product Code and Color | | | |
|---------------------------------|-------|-------|--------|
| 16030 | Black | 16080 | White |
| 16013 | Blue | 16060 | Yellow |
| 16040 | Green | 16100 | Orange |
| 16020 | Red | | |

| Medium Tip Product Code and Color | | | |
|-----------------------------------|-------|-------|--------|
| 16033 | Black | 16083 | White |
| 16013 | Blue | 16063 | Yellow |
| 16043 | Green | 16103 | Orange |
| 16023 | Red | | |

| Broad Tip Product Code and Color | | | |
|----------------------------------|-------|-------|--------|
| 16034 | Black | 16084 | White |
| 16014 | Blue | 16064 | Yellow |
| 16044 | Green | 16104 | Orange |
| 16024 | Red | | |

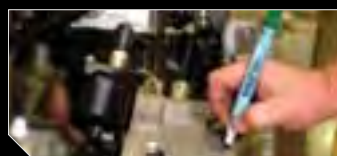
DALO® Industrial Paint Marker

- Steel tip paint marker - Large Barrel

| Medium Tip Product Code and Color | | | |
|-----------------------------------|-------|-------|--------|
| 16033 | Black | 16083 | White |
| 16013 | Blue | 16063 | Yellow |
| 16043 | Green | 16103 | Orange |
| 16023 | Red | | |

| Broad Tip Product Code and Color | | | |
|----------------------------------|-------|-------|--------|
| 16034 | Black | 16084 | White |
| 16014 | Blue | 16064 | Yellow |
| 16044 | Green | 16104 | Orange |
| 16024 | Red | | |

Temporary Ink Markers



Typical Applications

- Quality control
- Work in - progress
- Automotive industry

- Perfect for temporary writing on non-treated, non-painted metal surfaces which require ink that can be removed with water or with detergents with a pH of ≤ 10
- General purpose xylene-free temporary ink markers
- Ideal for quality control
- No ghosting or bleed-through occurs when removed marks are painted over
- Drying Time: 25-35 seconds

RINZ OFF® & SUDZ OFF® Temporary

RINZ OFF® Water Removable

- Marks can be removed with water

| Medium Tip Product Code and Color | | | |
|-----------------------------------|-------|-------|--------|
| 91109 | Black | 91106 | Red |
| 91105 | Blue | 91757 | Yellow |
| 91108 | Green | 91709 | White |

| Broad Tip Product Code and Color | | | |
|----------------------------------|-------|-------|--------|
| 44109 | Black | 44106 | Red |
| 44105 | Blue | 44757 | Yellow |
| 44108 | Green | 44709 | White |

SUDZ OFF® Detergent Removable

- Marks can be removed with mild detergent (pH higher than 10)

| Medium Tip Product Code and Color | | | |
|-----------------------------------|-------|-------|--------|
| 91985 | Black | 91939 | Red |
| 91938 | Blue | 91694 | Yellow |
| 91371 | Green | 91146 | White |

| Broad Tip Product Code and Color | | | |
|----------------------------------|-------|-------|--------|
| 44985 | Black | 44939 | Red |
| 44938 | Blue | 44694 | Yellow |
| 44371 | Green | 44146 | White |

Speciality Markers



Typical Applications

- Packaging
- Marks cardboard, plastic, rubber, metal, and many other surfaces
- Electronics industry

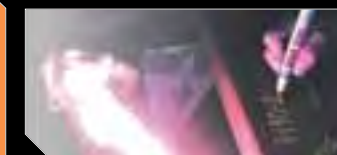
STRIKE-MARK™

STRIKE-MARK™ Fast Dry Marker

- Over 12 times the writing life compared to other permanent ink markers
- Drying time: less than 10 seconds on most surfaces
- Valve action tip allows dried out tips to re-ink...no waste!

| Fine Tip Product Code and Color | | Medium Tip Product Code and Color | |
|---------------------------------|-------|-----------------------------------|-------|
| 33682 | Black | 16033 | Black |
| 33731 | Blue | 16013 | Blue |
| 33734 | Green | 16043 | Green |
| 33736 | Red | 16023 | Red |

HIGH TEMPERATURE MARKERS



Typical Applications

- Components exposed to high temperatures
- Ideal for marking glass, metal and ceramics
- Electronics industry

- Ideal for marking on surfaces that are exposed to extreme high temperatures
- Mark becomes fused and permanent after heat is applied - up to 2000°F
- Ideal for marking glass, metal and ceramics
- Paint withstands extreme weather conditions without losing legibility or brightness

HIGH TEMP 44

- Permanent fiber tip valve action paint marker
- Valve action mechanism prevents paint in barrel from drying when cap is left off
- Threaded barrel allows the marker to be screwed into a jig or apparatus
- Drying time: 45 seconds - 1 minute

| Product Code and Color | | Product Code and Color | |
|------------------------|-------|------------------------|--------|
| 44250 | Black | 44219 | White |
| 44094 | Blue | 44424 | Yellow |
| 44266 | Green | | |

HIGH TEMP TXP

- Stainless steel-ball tip - no risk of tip wear even if you are writing on rough surfaces
- Easily writes through oil, grease and water
- Writes at all angles, even upside down
- Drying time: 25 - 30 minutes

| Fine Tip Product Code and Color | | Medium Tip Product Code and Color | |
|---------------------------------|--------|-----------------------------------|--------|
| 17030 | Black | 17033 | Black |
| 17080 | White | 17083 | White |
| 17060 | Yellow | 17063 | Yellow |

HIGH PURITY MARKERS



Typical Applications

- Marking stainless steel
- Aerospace industry
- Ship/boat/marine industries

- Used where surface degradation, contamination or other adverse effects are a concern
- Will not etch metal
- Paint will not contaminate or adversely affect the surface being marked
- Meets the requirements of the US Energy Research & Development Administration "Nuclear Grade" for black, red, yellow and white inks.

HIGH PURITY

- Permanent fiber tip valve action paint marker
- Valve action mechanism prevents paint in barrel from drying when cap is left off
- Drying time: 45 seconds - 1 minute

| Fine Tip Product Code and Color | | Medium Tip Product Code and Color | |
|---------------------------------|-------|-----------------------------------|--------|
| 33404 | Black | 44404 | Black |
| 33301 | Red | 44534 | Blue |
| 33729 | White | 44301 | Red |
| | | 44729 | White |
| | | 44916 | Yellow |

HIGH PURITY TXP

- Stainless steel-ball tip - no risk of tip wear even if you are writing on rough surfaces
- Easily writes through oil, grease and water
- Drying time: 25 - 30 minutes

| Medium Tip - Product Code and Color | | Product Code and Color | |
|-------------------------------------|--------|------------------------|--|
| 17473 | Black | | |
| 17463 | White | | |
| 14143 | Yellow | | |